

THE INFORMATION CONTAINED IN THIS DRAWING IS THE SOLE PROPERTY OF METATE CONSTRUCTION EQUIPMENT ANY REPRODUCTION IN PART OR WHOLE WITHOUT THE WRITTEN PERMISSION OF METATE CONSTRUCTION EQUIPMENT IS PROHIBITED.

FULLY MOBILE DRY BATCH READY MIX PLANT (60M²/H)

1. CONTROL CABIN
2. LABORATORY / WORKSHOP
3. 36 000 LITRE WATER TANK (6m CONTAINER)
4. 80TON MOBILE SILO
5. BATCH PLANT

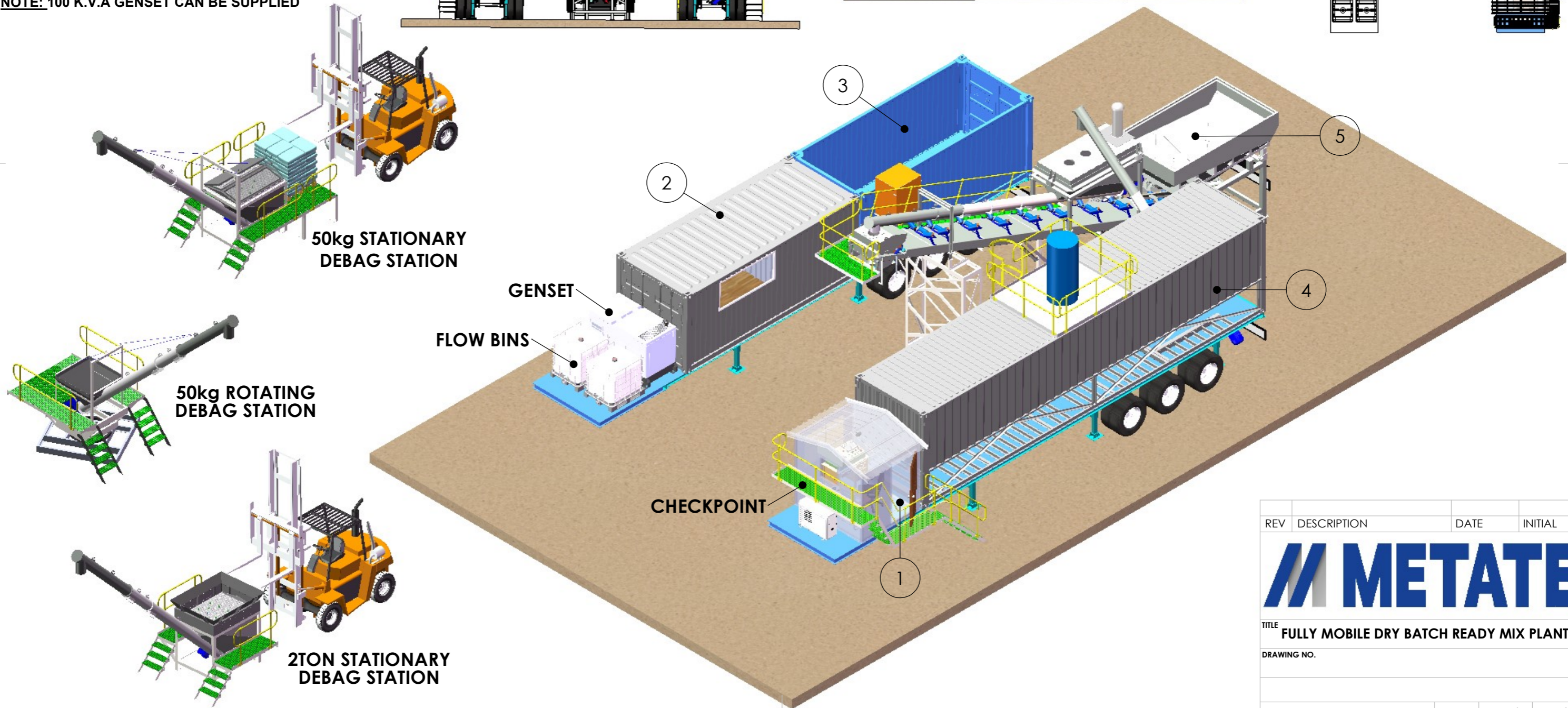
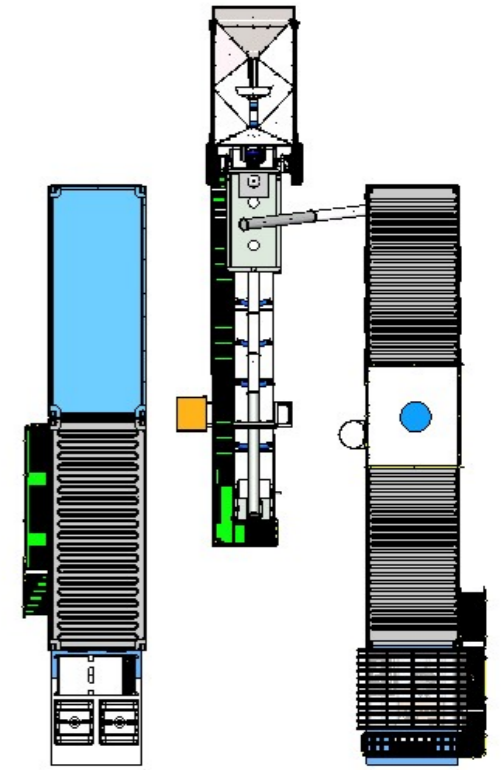
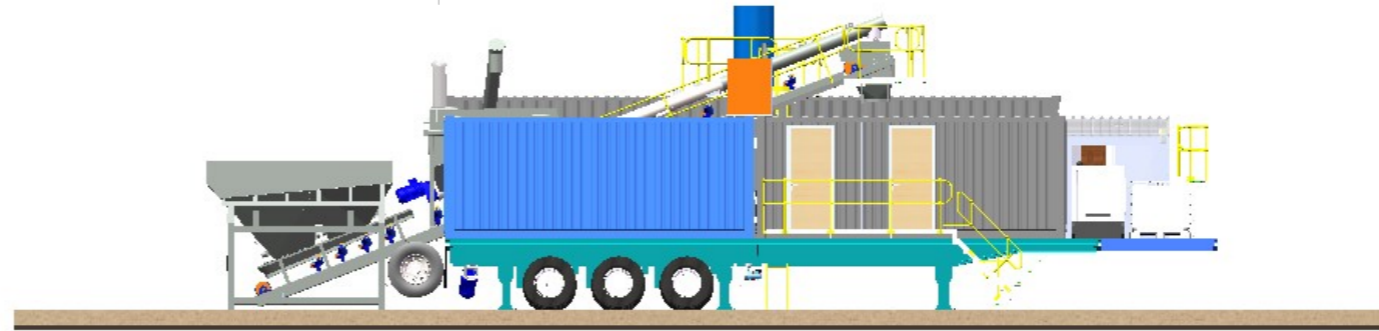
STANDARD FEATURES :

- COMPLETE PLUG AND PLAY ELECTRICAL SYSTEM
- FULLY AUTOMATED BATCHING SYSTEM

OPTIONAL:

- 2ND 80TON MOBILE SILO
- 50KG / 2TON BAG BREAKING STATIONS

NOTE: 100 K.V.A GENSET CAN BE SUPPLIED



REV	DESCRIPTION	DATE	INITIAL
METATE			
TITLE FULLY MOBILE DRY BATCH READY MIX PLANT			
DRAWING NO.			
CAD FILE	SCALE	SHEET 1 of 1	SIZE A3